

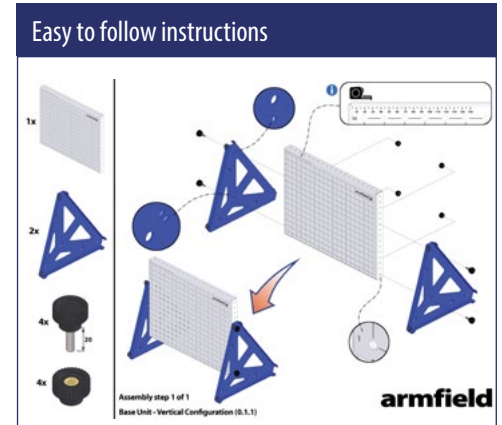
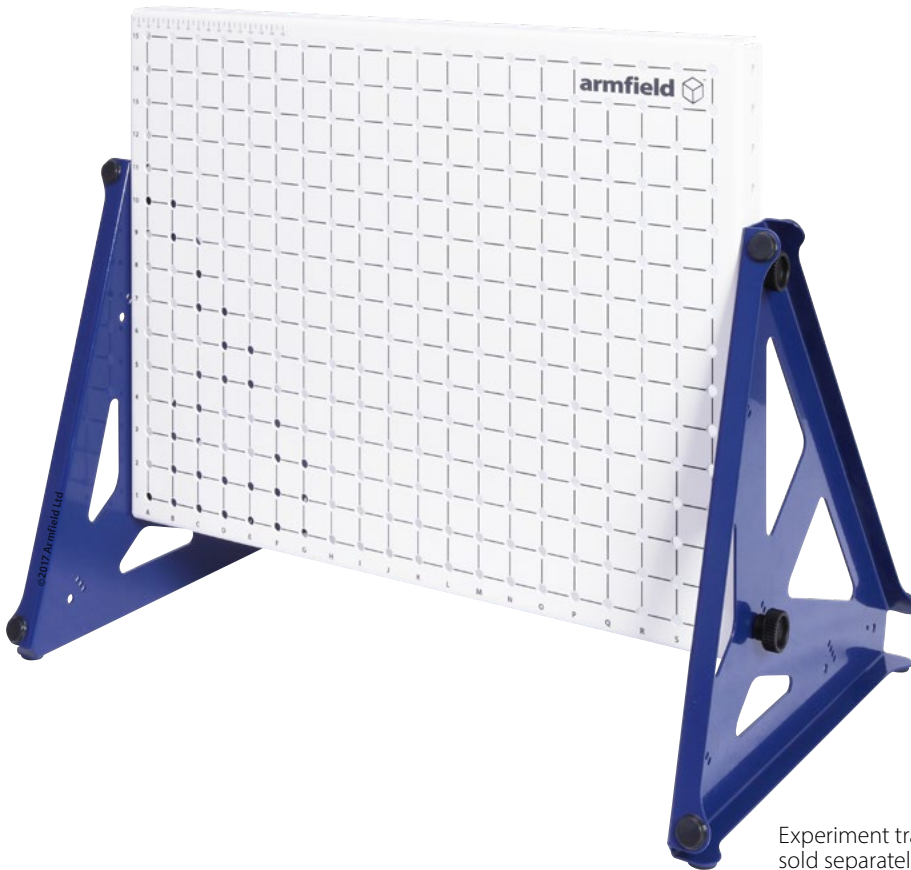
The Engineering Fundamentals range is designed to enable students to gain an understanding of the fundamentals of engineering by the process of learning via hands-on experimentation.

The unique multifunctional base unit (EF-BU) allows the student to carry out a variety of experiments covering Statics, Dynamics and Kinematics in 4 different configurations.

MULTIFUNCTIONAL AND CONFIGURABLE BASE UNIT TO SUPPORT THE INNOVATIVE ARMFIELD ENGINEERING FUNDAMENTALS RANGE

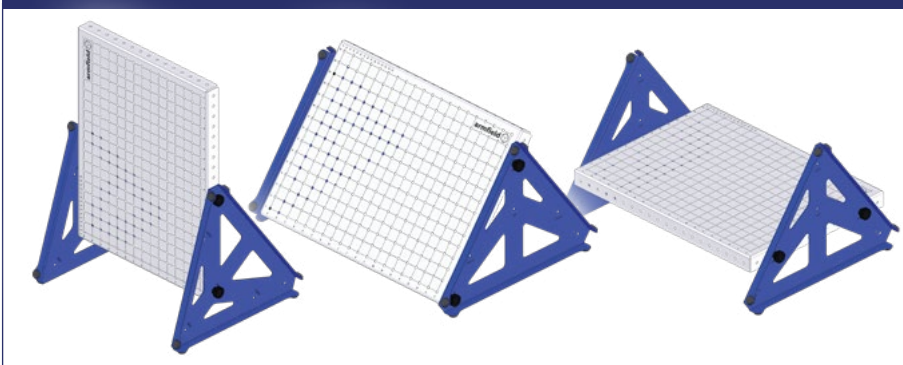
Description

The base unit is easy to set up with no assembly tools needed. The screen-printed design includes a measuring scale to ensure repeatable exercises. The base unit can be set up horizontally, vertically and in inclined positions to suit experiment.



Experiment trays are sold separately, see **Related Products**

Base Unit - Vertical configuration - extended height, Inclined configuration & Horizontal configuration



High quality materials



Features / Benefits

- ▶ Can be assembled in vertical (landscape and portrait), inclined and horizontal configurations (clear assembly instructions provided for each)
- ▶ Tool-less assembly
- ▶ Base Unit backboard has a screen-printed grid reference which all assembly instructions refer to for the location of parts
- ▶ Screen-printed design also includes a measuring scale to help identify correct length thumb screws etc
- ▶ Sturdy common base for assembling all EF experiments to
- ▶ Improve the student's dexterity by self-assembly with graphical instructions provided
- ▶ Simple grid reference system to assist with assembly of experiments
- ▶ Measuring scale included on backboard
- ▶ Flat-pack for easy storage

Requirements

Scale

EF TRAY

Experiment tray scale



EF-BU scale



EF-WS scale



- ▶ EF- experiment tray/s to build experiments. See selection under Related products
- ▶ Level and stable work surface to mount the EF-BU upon. The optional EF-WS is ideal for this if no suitable desk or bench is available



Workstation EF-WS

(Trays and Base Units sold separately)

Overall dimensions

Length	0.515m
Width	0.390m
Height	0.035m
Packed and crated shipping specifications	
Volume	0.1m ³
Gross weight	10Kg

Note: The dimensions given are for the Base Unit in its flat (stored) form (legs inside the backboard)

Demonstration / Instructional Capabilities

The entire EF range designed to work with the Base Unit.

See EF Experiment data sheets for specific Demonstration / Instructional Capabilities relating to the Topic / Experiment tray

Optional Accessories

▶ Workstation EF-WS

The workstation can be used as a demonstration platform at the front of the classroom, but also doubles up as a storage unit for the experiment trays and EF-BU Base Units.

Castors allow the entire Workstation and its contents to easily be wheeled between classrooms.

The workstation can be configured to store:

- Up to 12 Base Units and a maximum of 18 trays (2 Base Units occupy the space of 1 Tray).
- 12 Base Units and 12 trays.
- 18 trays if storing no Base Units.

▶ EF1-SPARES (recommended)

▶ A selection of the most commonly used parts in the EF range of kits, provided in a durable storage tray which can easily be stored along with the rest of the EF kits. By having a spares kit in the classroom, experiments can be varied. In addition misplaced or damaged items can be replaced quickly without any downtime.

Related products

Statics topic / experiment trays

- ▶ EF-1.1 - Forces
- ▶ EF-1.2 - Moments
- ▶ EF-1.3 - Beams
- ▶ EF-1.4 - Springs
- ▶ EF-1.5 - Torsion

Dynamics topic / experiment tray

- ▶ EF-2.2 - Simple Harmonic Motion

Kinematics topic / experiment trays

- ▶ EF-3.2 - Simple Mechanisms

Options

- ▶ EF-WS - Workstation
- ▶ EF1-Spares - Spares

Essential accessories / equipment

- ▶ Topic Experiment tray (see related products for available trays)

Ordering specification

- ▶ For more detail please contact our sales team

Ordering codes

- ▶ EF-BU - Base Unit
- ▶ EF-WS - Workstation (optional)
- ▶ EF Topic experiment trays (see related products for ordering codes)

Warranty

Armfield standard warranty applies with this product

Knowledge base

- > 28 years' expertise in research & development technology
- > 50 years' providing engaging engineering teaching equipment

Benefit from our experience, just call or email to discuss your laboratory needs, latest project or application.

An ISO 9001:2015 Company



armfield.co.uk

Aftercare

Installation
Commissioning
Training
Service and maintenance
Support: armfieldassist.com