



DESCRIPTION

The equipment comprises a 3.2-litre stainless steel batch mixing vessel equipped with an electrically driven double helical ribbon agitator.

The speed of the ribbon blender may be varied and measured with the tachometer supplied, in order to study the effect of speed on the mixing process. The power input to the unit is measured with a voltmeter and ammeter.

At the opposite end of the drive shaft to the motor, a double-cone mixer with 2.3-litre capacity may be mounted in order to study the operation of an alternative type of mixing unit.

The equipment is bench mounted.



TECHNICAL DETAILS

DATA NEEDED

REQUIREMENTS

Electrical supply:

FT5-A: 220-240V / 1ph / 50Hz

FT5-B: 120V / 1ph / 60Hz

FT5-G: 220-240V / 1ph / 60Hz

OVERALL DIMENSIONS

Height: 0.30m

Width: 0.60m

Depth: 0.25m

SHIPPING SPECIFICATION

Volume: 0.40m³

Gross weight: 150kg

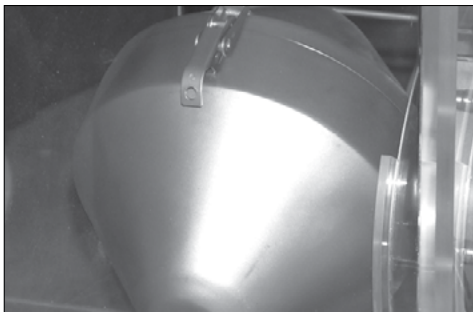
ORDERING CODES

Electrical supply:

FT5-A: 220-240V / 1ph / 50Hz

FT5-B: 120V / 1ph / 60Hz

FT5-G: 220-240V / 1ph / 60Hz



Cone blender



Control console



Head Office:
Armfield Limited
Bridge House, West Street,
Ringwood, Hampshire
BH24 1DY England

Telephone: +44 1425 478781
Fax: +44 1425 470916
E-mail: sales@armfield.co.uk

U.S. Office:
Armfield Inc.
9 Trenton - Lakewood Road
Clarksburg NJ 08510
Tel/Fax: (609) 208-2800
E-mail: info@armfieldinc.com

© 2016 Armfield Ltd. All Rights Reserved

We reserve the right to amend these specifications without prior notice. E&OE 03/14/3k
Correct at time of going to press.



armfield

Innovators in Engineering Teaching Equipment

learn more! www.armfield.co.uk



Scan for website



Find us on YouTube!
www.youtube.com/user/armfieldUK
Follow us on Twitter, Facebook,
LinkedIn and
WordPress

